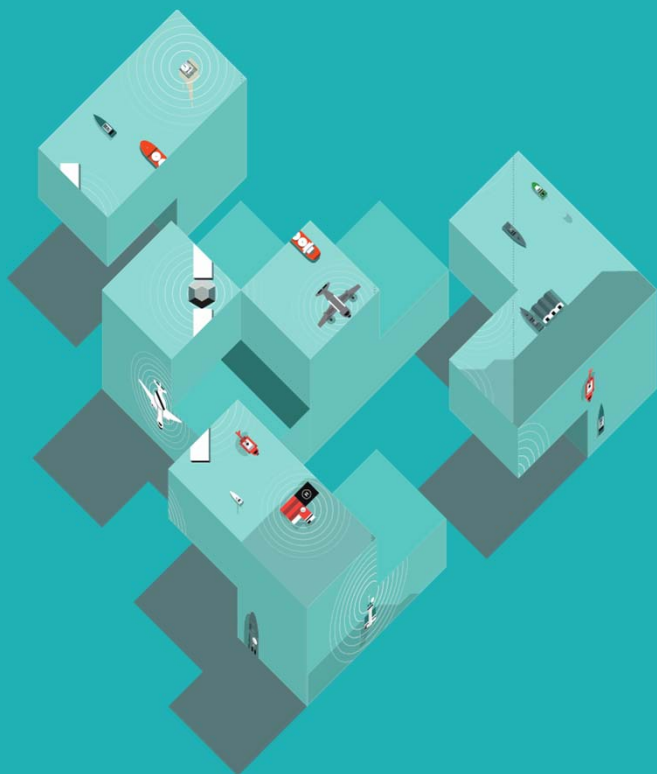


Maritime
CISE Common Information Sharing Environment

The European Commission's
science and knowledge service

Joint Research Centre



The Research Hub in the EUCISE2020 Network

VIP DAY ITALIA
Rome, 12th March 2019



THE RESEARCH HUB

1. what it is
2. objectives
3. transitional phase

1.

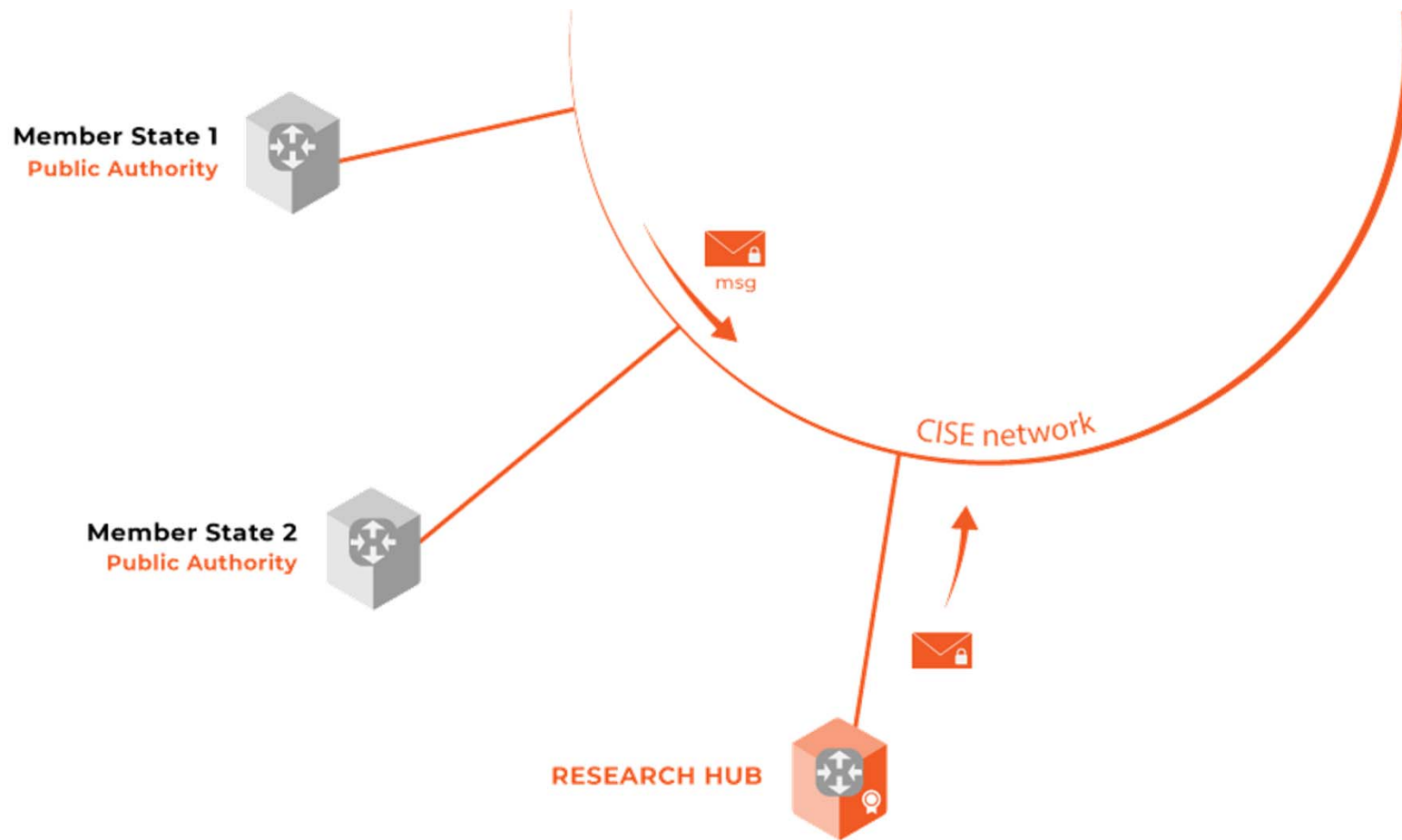
THE RESEARCH HUB

what it is

1. THE RESEARCH HUB what it is

The **Research Hub** is an installation of an EUCISE2020 node:

- Installed in **JRC premises**
- **Minimum Configuration**
- Connected to the EUCISE2020 network (Feb 2019)



2.

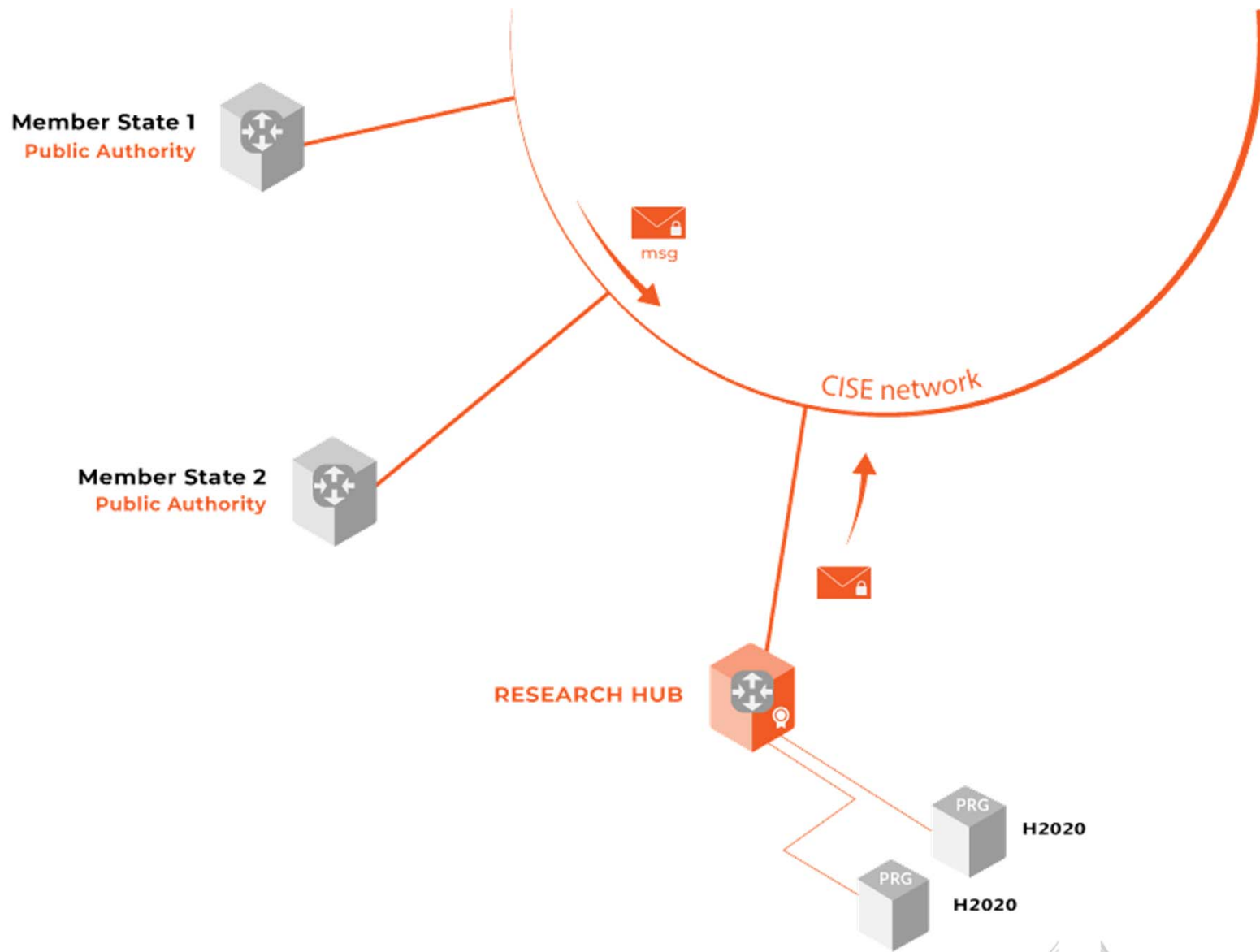
THE RESEARCH HUB

objectives

2. THE RESEARCH HUB objectives

The Research Hub will play **a relevant role** during the transitional phase by supporting different types of activities:

- Will allow the interested H2020 Projects to **test their CISE compliant interfaces**
- Will foster the **increase of the participation** in the CISE environment
- Will allow experimenting **novel ways to use data** exchanged through the CISE network



3.

THE RESEARCH HUB

transitional phase

3. THE RESEARCH HUB transitional phase

The JRC in collaboration with EMSA will use Research HUB:

- To check the **compliance** of new adaptors with the CISE Node
- To check the **conformity** of the messages exchanged
- To develop **new guidelines** for the CISE Data and Service Model
- To identify **improvement** in the software components
- To improve the **scalability** of the CISE Network

3. THE RESEARCH HUB transition phase

The Research Hub will be a **powerful tool** to **support research projects** interested in developing CISE interfaces (adaptor) to **disseminate their innovative services** and to help the **transition to the operational CISE**.

THE RESEARCH HUB

thank you